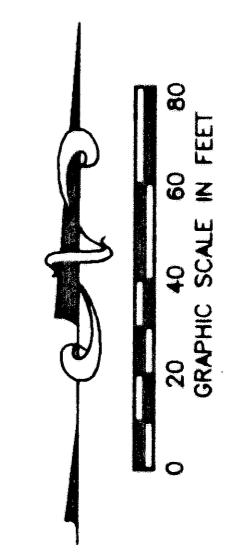


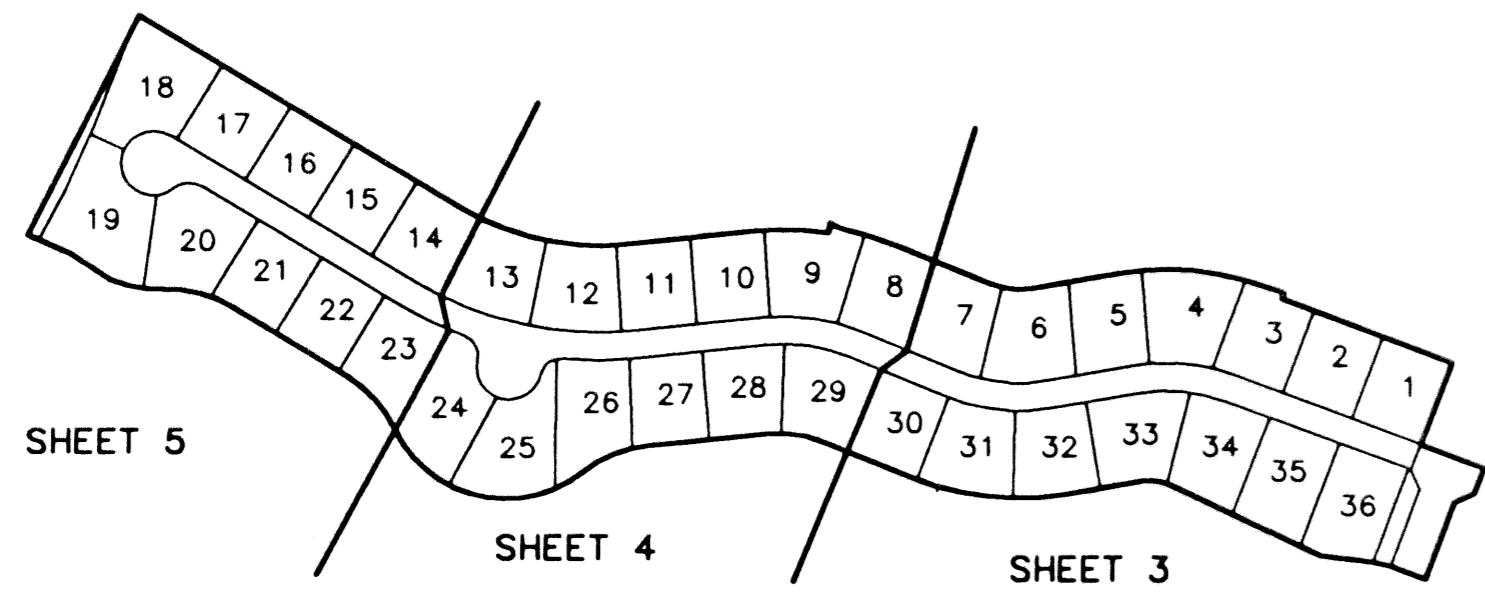
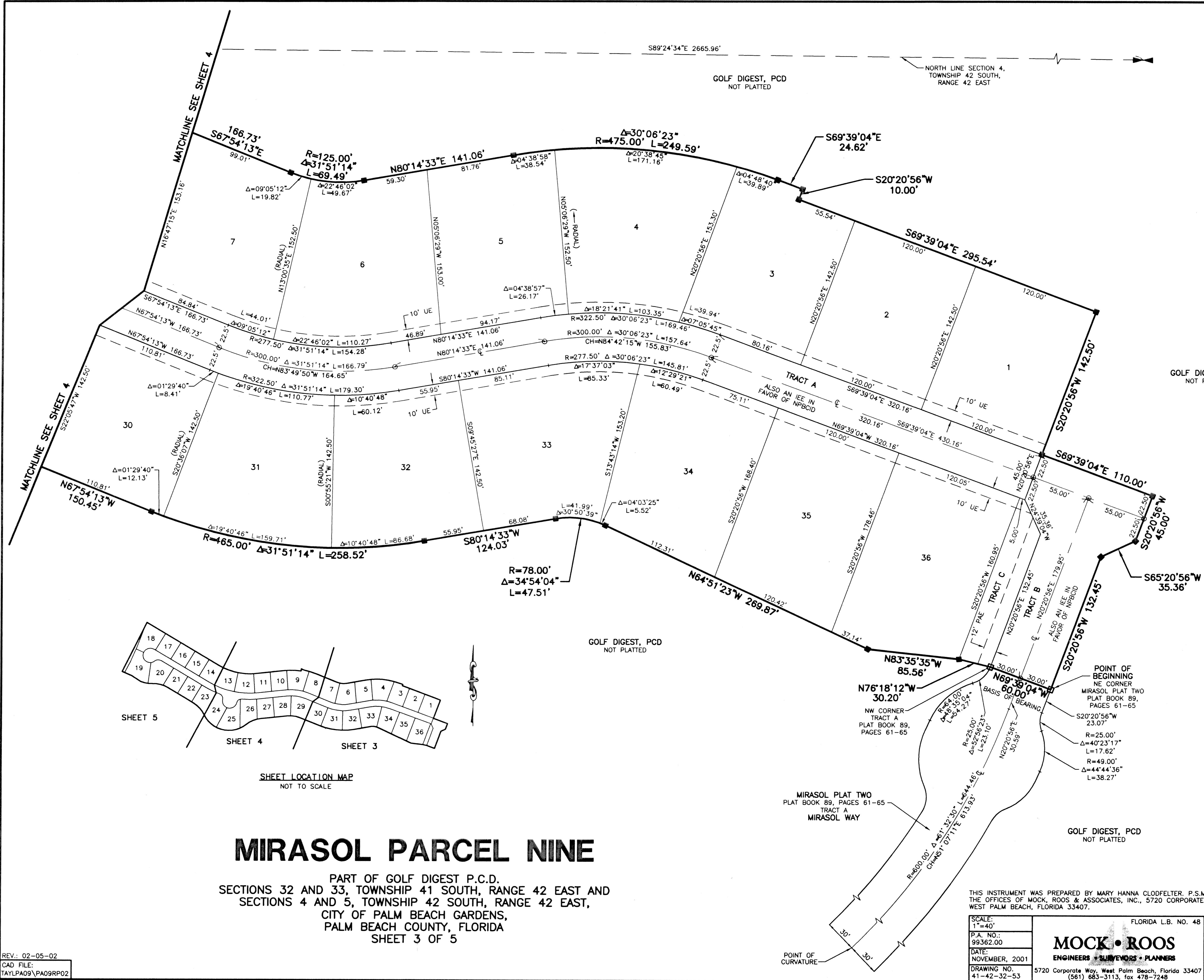
STATE OF FLORIDA
 COUNTY OF PALM BEACH

THIS PLAT WAS FILED FOR
 RECORD _____
 THIS _____ DAY OF _____
 AD, 2002 AND DULY RECORDED
 IN PLAT BOOK _____ ON PAGES
 _____ AND _____

DOROTHY H. WILKEN, CLERK
 BY: _____, D.C.



CIRCUIT COURT SEAL



SHEET LOCATION MAP NOT TO SCALE

MIRASOL PARCEL NINE

PART OF GOLF DIGEST P.C.D.
 SECTIONS 32 AND 33, TOWNSHIP 41 SOUTH, RANGE 42 EAST AND
 SECTIONS 4 AND 5, TOWNSHIP 42 SOUTH, RANGE 42 EAST,
 CITY OF PALM BEACH GARDENS,
 PALM BEACH COUNTY, FLORIDA
 SHEET 3 OF 5

- LEGEND**
- Δ CENTRAL (DELTA) ANGLE
 - CH CHORD
 - DE DRAINAGE EASEMENT
 - IEE INGRESS-EGRESS EASEMENT
 - FPL FLORIDA POWER AND LIGHT
 - L ARC LENGTH
 - NPBCID NORTHERN PALM BEACH COUNTY IMPROVEMENT DISTRICT
 - (NR) NON-RADIAL
 - ORB OFFICIAL RECORD BOOK
 - PAE PEDESTRIAN ACCESS EASEMENT
 - PB PLAT BOOK
 - PG(S) PAGE(S)
 - PCD PLANNED COMMUNITY DEVELOPMENT
 - R RADIUS
 - UE UTILITY EASEMENT
 - PERMANENT REFERENCE MONUMENT
 - FOUND LB 048 (4" x 4" CONCRETE)
 - PERMANENT REFERENCE MONUMENT SET LB 048 (4" x 4" CONCRETE)
 - PERMANENT CONTROL POINT SET LB 048
 - ⊙ CENTERLINE
 - C1 CURVE TABLE REFERENCE

THIS INSTRUMENT WAS PREPARED BY MARY HANNA CLODFELTER, P.S.M. IN THE OFFICES OF MOCK, ROOS & ASSOCIATES, INC., 5720 CORPORATE WAY, WEST PALM BEACH, FLORIDA 33407.

SCALE: 1"=40'	FLORIDA L.B. NO. 48
P.A. NO.: 99362.00	MOCK • ROOS ENGINEERS • SURVEYORS • PLANNERS
DATE: NOVEMBER, 2001	
DRAWING NO. 41-42-32-53	
5720 Corporate Way, West Palm Beach, Florida 33407 (561) 683-3113, fax 478-7248	

SHEET 3 OF 5

MIRASOL PARCEL NINE
 PART OF GOLF DIGEST P.C.D.
 SITUATE IN SECTIONS 32 AND 33,
 TOWNSHIP 41 SOUTH, RANGE 42 EAST,
 AND IN SECTIONS 4 AND 5,
 TOWNSHIP 42 SOUTH, RANGE 42 EAST,
 CITY OF PALM BEACH GARDENS,
 PALM BEACH COUNTY, FLORIDA

S:\Top\Twp009\m\g\p09r\p02.dwg 03/26/02 10:51:09 AM EST

REV.: 02-05-02
 CAD FILE:
 TAYLPA09\PA09RP02